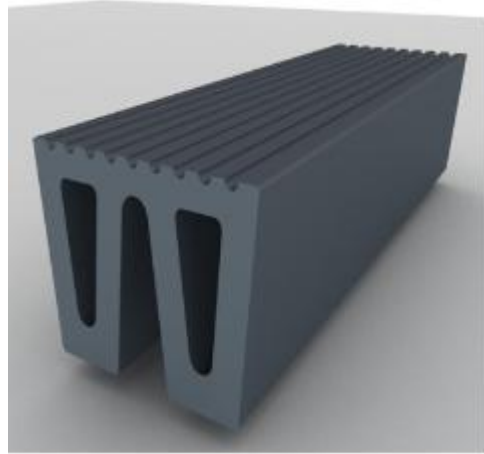


W Type Rubber Fender

W fender is one of the most effective fender products at present. This particular design guarantees greater contact area and smaller surface pressure. At the same time, compared with other large fenders, the installation is very simple, and all of them are very popular in the current market. The W fender has been optimized in the past two generations to optimize the detail, make the flatness better, the accuracy higher and the less error.



Also, we can design the product size according to the customer's requirements, and optimize the purchasing content for the customers at the same time. We will communicate with customers according to the existing requirements of customers, and understand the exact needs of customers, so as to better provide customers with their products, reduce unnecessary cost expenditures. At the same time, the production time, we through the introduction of automated equipment, optimizing the production process, at the same time to improve the quality of the overall production efficiency by 70%, greatly reducing the delivery time, save a lot of time for customers.

Features of W Type Rubber Fender

Special for ships

Large contact area and low surface pressure

Dolphin Rubber's wide-ranging rubber fenders are manufactured in accordance with high-quality standards. We have successfully served for many customs all over the world. We promise the best design and materials for a low maintenance, long service life whatever your working demands and environmental conditions are. Using our exclusive solutions, we can offer you the best way with the least resources.

We believe that with our rich experience, we can offer suggestions to make the most suitable scheme.

For the very best end-to-end solutions, please connect DPNRUBBER Workstation with your full information, or the details of your item, we will give your advice according to your actual situation within 24 hours.